

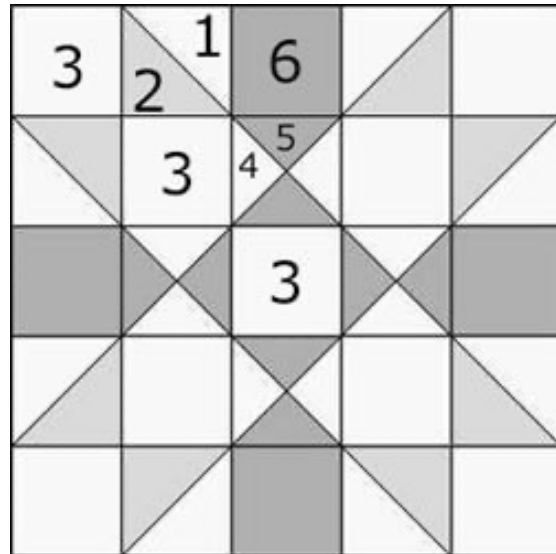
Providence Quilt Block


Is the Providence quilt block as hard to make as it looks?

Thankfully, NO!!!

It's simply the smart use of half and quarter square triangles. We'll make those HSTs using the 8-at-a-time method to streamline construction.

For instructions to make this block, visit: <https://www.generations-quilt-patterns.com/providence-quilt-block.html>



			Cutting Chart for a Providence Quilt Block		
			~ Traditional Piecing ONLY ~		
			Finished Block Size		
Patch	Fabric	Qty	5"	7 1/2"	10"
1	Bac	1	4 1/4" x 4 1/4"	5 1/4" x 5 1/4"	6 1/4" x 6 1/4"
2	Med	1	4 1/4" x 4 1/4"	5 1/4" x 5 1/4"	6 1/4" x 6 1/4"
3	Bac	7	1 1/2" x 1 1/2"	2" x 2"	2 1/2" x 2 1/2"
4	Bac	2	2 1/2" x 2 1/2"	3" x 3"	3 1/2" x 3 1/2"
5	Dark	2	2 1/2" x 2 1/2"	3" x 3"	3 1/2" x 3 1/2"
6	Dark	4	1 1/2" x 1 1/2"	2" x 2"	2 1/2" x 2 1/2"
Unfinished Block Size			5 1/2"	8"	10 1/2"
Grid Size			1"	1 1/2"	2"